

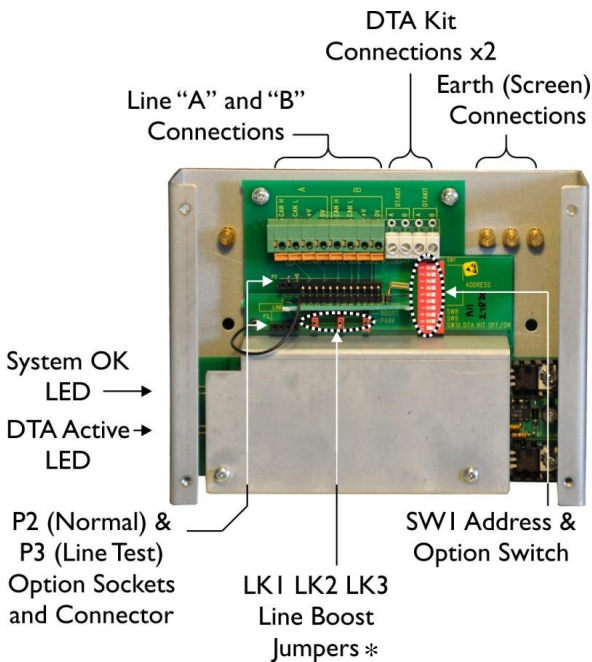
Quickstart Installation Guide

BVOCRIF

The BVOCRIF repeater is a booster unit to enable cable runs exceeding 200 metres, and also an interface for upto two DTAKIT Toilet Alarm systems for OmniCare.

For full installation instructions please refer to the OmniCare Installation Manual.

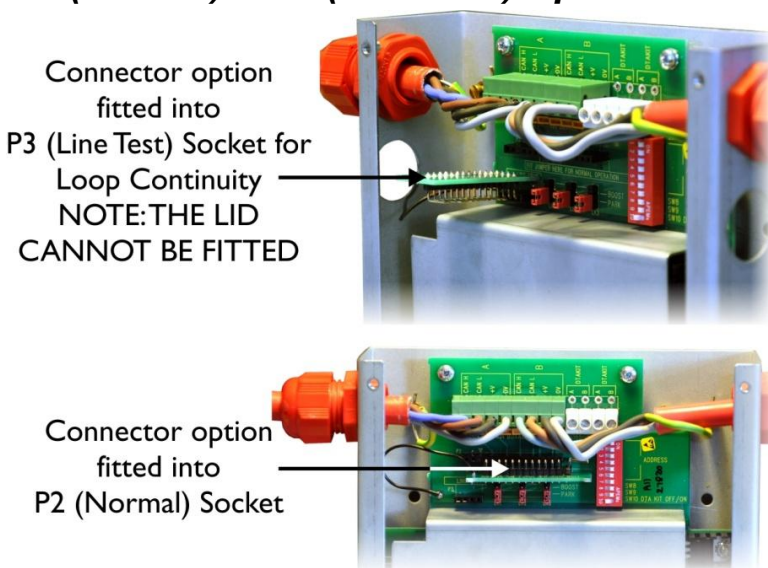
Connections, Option Jumpers, Switch Settings & Indicators



Ident	Option
LK1&2	Reduces termination resistors to 75Ω *
LK3	Increases output level of CANBus Drivers *
P2	"Normal" connector for option plug
P3	"Line Test" connector for option plug
SW1.1 – SW1.7	Sets unit Address: All "ON" = default address, (When switch is "OFF" bit is set, SW1.1 is LSB)
SW1.8	Not used, default is set to "ON"
SW1.9	"ON" – monitor single DTAKIT, "OFF" – monitor two DTAKITS
SW1.10	Set to "ON" to enable DTAKIT interface

Note: * These jumpers should only be fitted when required since they increase the overall current consumption of the system.

P2 (Normal) & P3 (Line Test) Option Sockets & Connector




The BVOCRIF includes a tethered option PCB that enables Line Continuity to be tested.

When the PCB is fitted in P3 the "CAN H" and "CAN L" of A and B are linked to enable continuity testing.

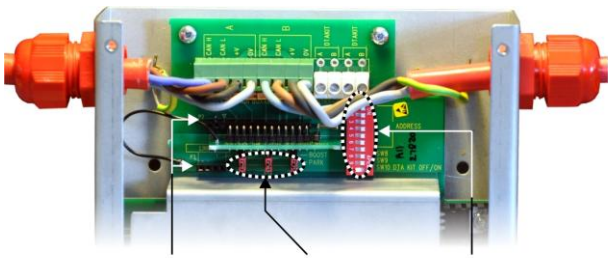
The lid cannot be fitted while the option PCB is fitted to P3.

After testing return the PCB to P2 to enable normal operation. The BVOCRIF will not work unless the PCB is fitted to P2.



Caution:
Do not connect the Loop Cabling to the DTAKIT "A" or "B" terminals.
Incorrect connection may damage the BVOCRIF.

Option Jumpers & Switches when used as a Repeater Only

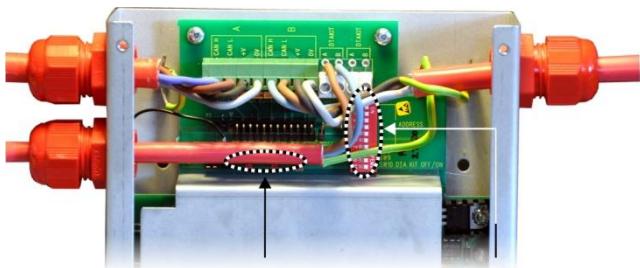


P2 (Normal) & P3 (Line Test) Option Sockets and Connector
 LK1 LK2 LK3 Line Boost Jumpers
 SW1 Address & Option Switch (SW1.10 set "OFF")

	Option
LK1&2	Reduces termination resistors to 75Ω *
LK3	Increases output level of CANBus Drivers *
SW1.1 – SW1.7	All set to "ON" (address not required when repeater only)
SW1.8	Set to "ON"
SW1.9	Set to "ON"
SW1.10	Set to "OFF" (DTAKIT Disabled)

* These jumpers should only be fitted when required since they increase the overall current consumption of the system.

Option Jumpers & Switches when used with a Single DTAKIT

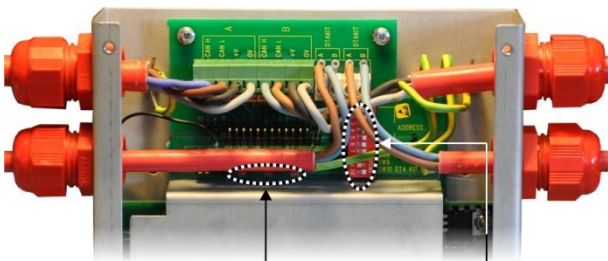


LK1 LK2 LK3 Line Boost Jumpers *
 SW1.1 - SW1.7 Address Switch
 SW1.9 & SW1.10 Set to "ON"

	Option
LK1&2	Reduces termination resistors to 75Ω *
LK3	Increases output level of CANBus Drivers *
SW1.1 – SW1.7	Sets unit address: All "ON" = default address, (When switch is "OFF" bit is set, SW1.1 is LSB)
SW1.8	Set to "ON"
SW1.9	Set to "ON" (monitor Single DTAKIT)
SW1.10	Set to "ON" (DTAKIT Enabled)

* Should only be fitted when required


Option Jumpers & Switches when used with Two DTAKITs



LK1 LK2 LK3 Line Boost Jumpers *
 SW1.1 - SW1.7 Address Switch
 SW1.9 "OFF"
 SW1.10 "ON"

	Option
LK1&2	Reduces termination resistors to 75Ω *
LK3	Increases output level of CANBus Drivers *
SW1.1 – SW1.7	Sets unit address: All "ON" = default address, (When switch is "OFF" bit is set, SW1.1 is LSB)
SW1.8	Set to "ON"
SW1.9	Set to "OFF" (monitor Dual DTAKITs)
SW1.10	Set to "ON" (DTAKIT Enabled)

* Should only be fitted when required

	<p>Caution: Do not connect the Loop Cabling to the DTAKIT "A" or "B" terminals. Incorrect connection may damage the BVOCRIF.</p>
---	---